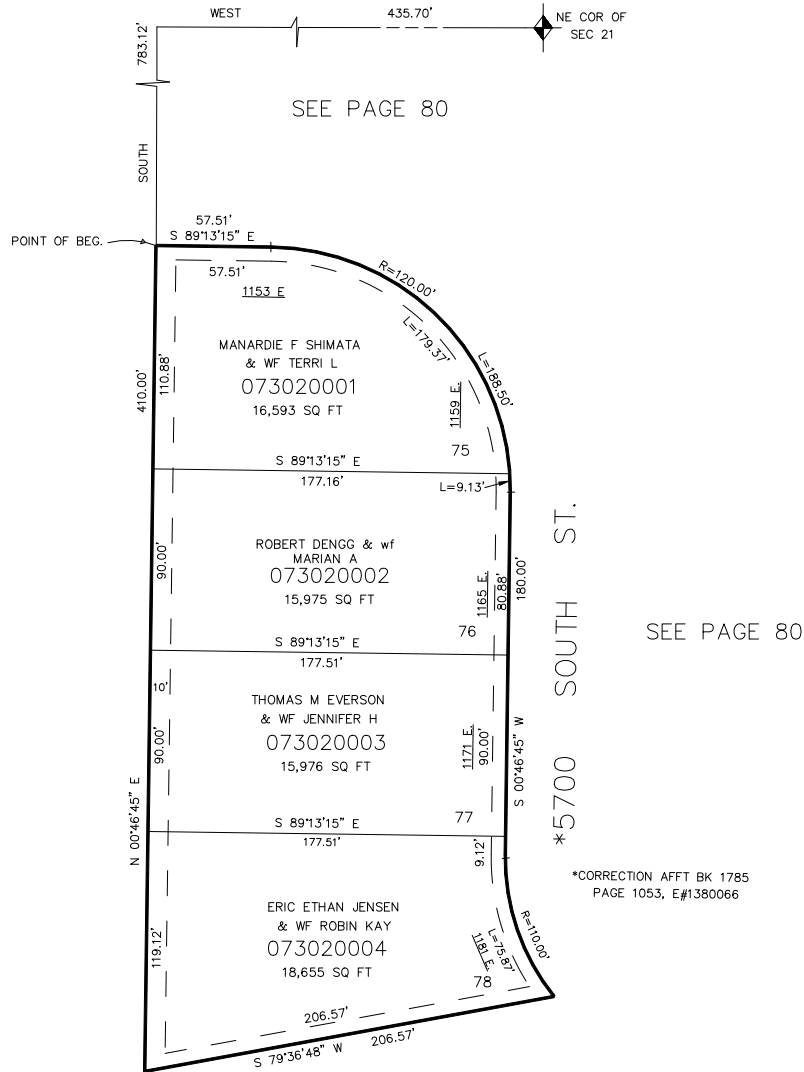


# PART OF SEC. 21, T.5N., R.1W., S.L.B. & M. PLEASANT VALLEY ESTATES PHASE 7

LOTS 75 - 78  
IN SOUTH OGDEN CITY

SCALE 1" = 50'

TAXING UNIT: 27



FOR COMPLETE ENG. DATA  
SEE ORIG. DED. PLAT IN  
BOOK 27, PAGE 60.

7' UTILITY & DRAINAGE EASEMENTS  
EACH SIDE OF PROPERTY LINE AS  
INDICATED BY DASHED LINES,  
EXCEPT AS OTHERWISE SHOWN.